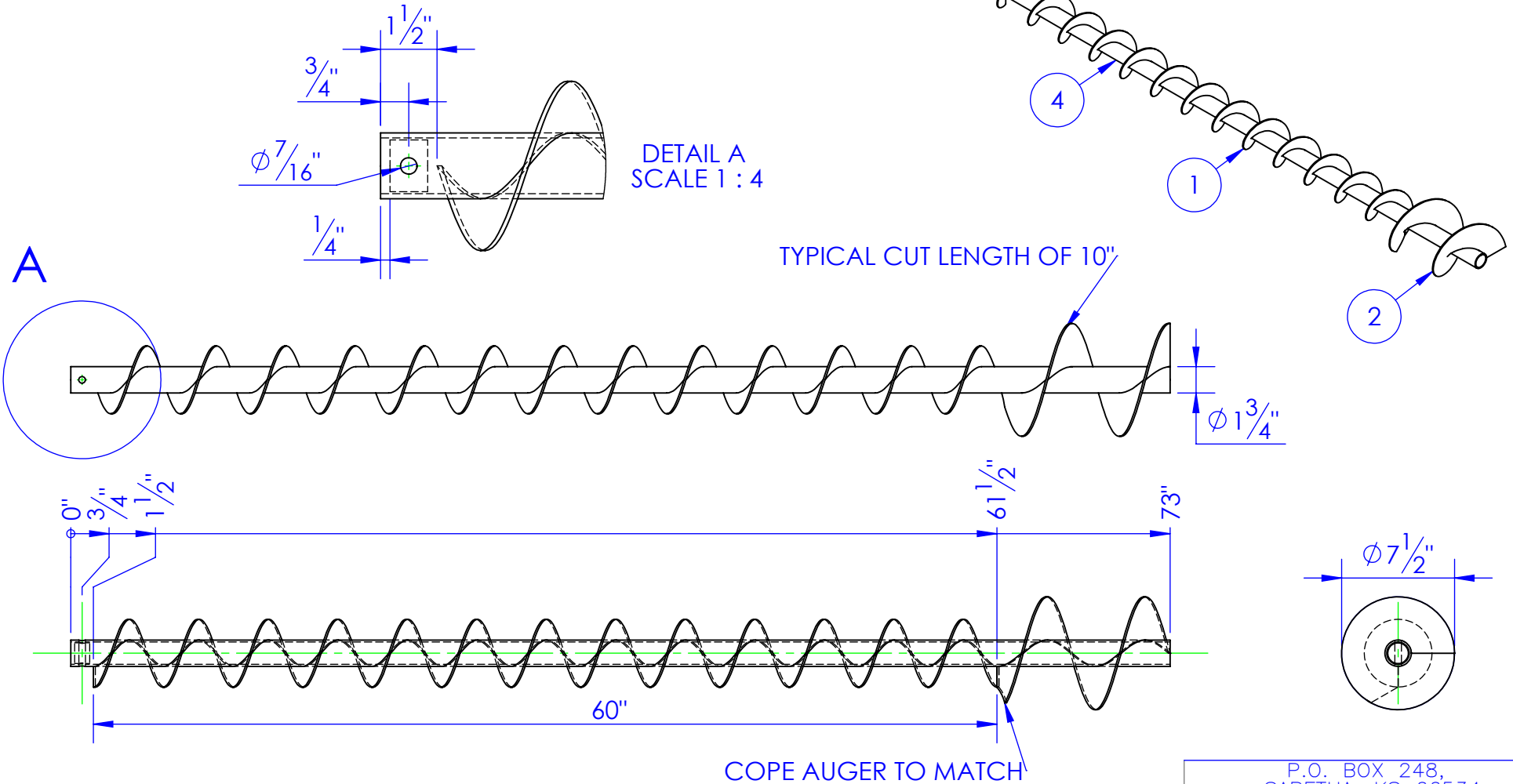


ITEM NO.	PART NUMBER	DESCRIPTION	DRAWING #	QTY.
1	HF-FL5x1-25.32x316	5" LEFT HAND FLIGHTING	STOCK	1
2	HF-FL8x1.75LHx316	8" LEFT HAND FLIGHTING	STOCK	1
3	ST-HR 1.375 ROUND L 1	LENGTH: 1"	STOCK	1
4	ST-MT 1.750x1.482 L 73	LENGTH: 73"	STOCK	1

REVISIONS			
REV.	DESCRIPTION	DATE	APPROVED
A	INITIAL RELEASE	9/20/2013	



PROPRIETARY AND CONFIDENTIAL
THE INFORMATION CONTAINED IN THIS DRAWING IS THE SOLE PROPERTY OF TRIPLE C INC. ANY REPRODUCTION IN PART OR AS A WHOLE WITHOUT THE WRITTEN PERMISSION OF TRIPLE C INC. IS PROHIBITED.

DIMENSIONS ARE IN INCHES TOLERANCES: FRACTIONAL $\pm 1/16$ ANGULAR: MACH ± 1 BEND \pm TWO PLACE DECIMAL ± 0.10 THREE PLACE DECIMAL ± 0.005	
MATERIAL	--
DO NOT SCALE DRAWING	

NAME	DATE
DRAWN HEATH	2/3/2014
PART #	
ASM #	HF-HF 8IN AUGER
COMMENTS: AUGER ASM 8" TUBE REPLACEMENT	

P.O. BOX 248, SABETHA, KS 66534			
TRIPLE C INC.			
SIZE A	DWG. NO. 30-1222	REV. A	
SCALE: 1:10	WEIGHT: 23.19	SHEET 1 OF 1	